

GE Healthcare

Probe Care Quick Cards

Pre-Scan Checklist

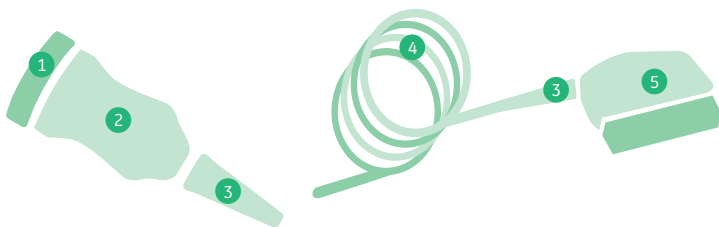
For more information on
probe care and handling
procedures, go to:
[http://gehealthcare.com/
transducers](http://gehealthcare.com/transducers)

Pre-Scan Checklist

Prior to use instructions

Before use, inspect the following areas of the transducer:

- 1 Acoustic lens or cap: check for cuts, tears, gouging, abrasion, swelling, bubbling, delamination or discoloration.
- 2 Transducer body (shaft, handle, & nose-piece): inspect for cracks, abrasions, or evidence of impact.
- 3 Strain relief and cable assembly: check for cracks, cuts, tears, abrasion, kinking or crushing.
- 4 Cable assembly: check for discoloration or inflexibility of the transducer cable or strain-relief.
- 5 System connector: check for foreign objects, broken latches, or bent pins and shielding.



Transesophageal transducers (TEE): inspect the flexible portion for tears, bite holes, rips, or discoloration.



Warning: Cross-contamination

Transducers with cracks, abrasions or tears may harbor dangerous contaminants or may tear protective sheaths used with the ultrasound transducers. Do not use transducers with any signs of damage.



Warning: Electrical leakage

Non-hazardous voltage is present during normal transducer use. GE Healthcare recommends regular electrical safety leakage testing to help ensure operator and equipment safety.



You can also download the complete Ultrasound Probe Cleaning & Disinfection Manual from the GE Healthcare Support Documentation Library:

<https://www.gehealthcare.com/support/support-documentation-library>

Click the Enter Portal button and search for document number 5661328.